

Community Solutions Network  
Innovation Workshop

# Smart Climate Resilience for Atlantic Canada

September 28, 2023



CLIMAtlantic

Led by:



Lead technical partner:



With funding provided by:



Infrastructure  
Canada

Canada





# Zoom

<https://us06web.zoom.us/j/89130687283>

**Meeting ID: 891 3068 7283**

# Agenda

## Hybrid Event

**1:00-1:25** – Welcome, CSN, CLIMAtlantic

**1:25-1:55** – Rex Holwell, *SmartICE*

**1:55-2:25** – Victoria Fernandez, *Halifax Regional Municipality*

**2:25-2:55** – Marcel Vienneau and Clément Mousset, *Association Francophone des Municipalités du Nouveau-Brunswick*

**2:55-3:15** – Joshua Welch, *Evergreen, AI for the Resilient City*

**3:15-3:25** – Wrap-up and Close

**3:25-3:35** – **Break**

**3:35-4:00** – **Virtual and In-person separate activities**

Floor Presentations (*in-person only*)

Virtual networking (*virtual only*)

**4:00-5:00** – Facilitated networking (in-person only)



# Land Acknowledgement





**EVERGREEN**

**We connect, collaborate and catalyze ideas into actions that will shape our cities for the better.**

**Evergreen works to make cities and communities flourish.**

**Since 1991, we've been facilitating change. Working with other community builders to convene, collaborate and catalyze ideas into action.**





# COMMUNITY Solutions Network

The Community Solutions Network is a program led by Evergreen in partnership with Open North. Our team works with communities to build capacity and improve the lives of residents using data and connected technology approaches.

We deliver advisory services, workshops, and online resources that focus on key areas such as climate resilience, data governance, inclusive public space, technology procurement, and public engagement.

Project lead:



Lead technical partner:



With funding provided by:



# WHAT WE DO:

## 1 We make information about smart cities issues and approaches available and accessible to everyone.

- Provide personalized advice; and
- Share knowledge, lessons learned and best practices across Canada and around the world. (ex. security, data, governance, procurement, public engagement)

## 2 We help communities talk to the right people and find the right partners.

- Engage communities and stakeholders from all sectors through new and existing networks; and
- Facilitate connections and partnerships between and among communities and stakeholders.



# HOW WE CREATE IMPACT

IN COMMUNITIES

1



## Advisory Service

Personalized data and technology related guidance and support to help municipal staff and Indigenous communities navigate the smart cities landscape.



## New Partnerships

Help communities talk to the right people and find the right partners.



## Knowledge-sharing

Make information about smart cities issues and approaches available and accessible to everyone. Including the Community Solutions Portal, Canada's largest, curated, online collection of smart cities resources.





### Match Making

Actively facilitate productive connections between stakeholders and communities.



### Building Awareness

Build awareness of and stimulate broad discussion on complex emerging smart cities issues.



### Creating Networks

Create and maintain open platforms and lasting relationships where stakeholders and communities can actively engage with each other.

# 2

# HOW WE CREATE IMPACT

## IN COMMUNITIES

# EVERGREEN COMMUNITY SOLUTIONS ACROSS CANADA (2019-2022)

- ENGAGED COMMUNITIES
- EVENT PARTICIPATION
- NETWORK ENGAGEMENTS  
(PROV-MUNICIPAL ASSOCIATIONS, etc.)
- ADVISORY SERVICES DELIVERED
- ONLINE ENGAGEMENTS

50+  
IN-PERSON,  
VIRTUAL & HYBRID  
EVENTS ACROSS  
CANADA

525+  
MUNICIPALITIES &  
INDIGENOUS COMMUNITIES

450+  
PARTNERSHIPS & STAKEHOLDER  
ENGAGEMENTS

3,500+  
NATIONAL SUMMIT PARTICIPANTS

225K+  
ONLINE ENGAGEMENTS  
(SOCIAL MEDIA, NEWSLETTER, etc.)





# INNOVATION WORKSHOPS

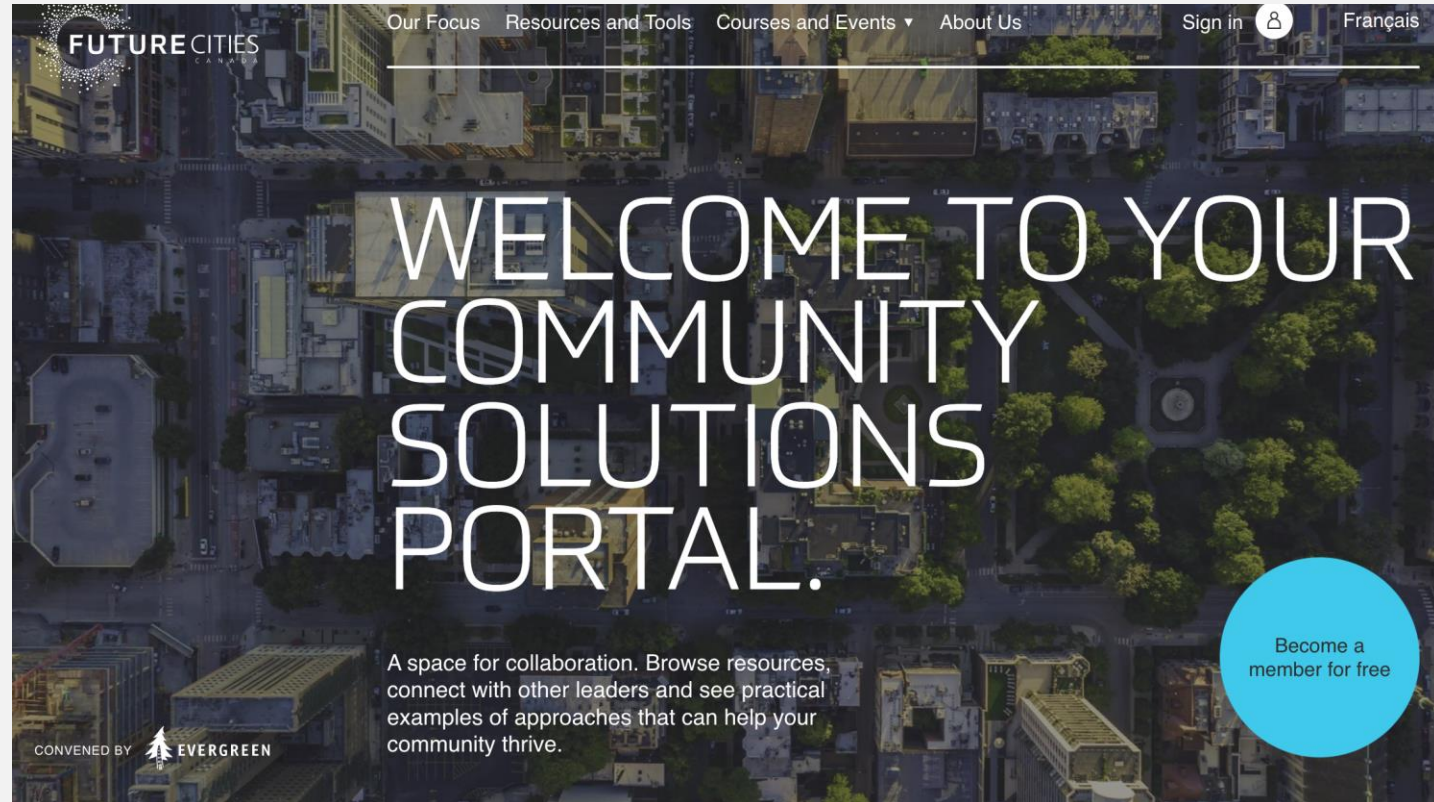
This series of hybrid regional events bring together municipalities, Indigenous communities, municipal networks, academics, and subject-matter experts to connect, share, and ask questions around how to best use data, tools and processes to advance action on emerging issues around climate adaptation, resilience and smart cities.



# COMMUNITY SOLUTIONS PORTAL

The Community Solutions Portal is Canada's digital hub of resources for communities of all sizes. On the Community Solutions Portal you can access the latest research briefs, toolkits, and other practical examples of approaches that can help your community thrive.

[communitysolutionnetwork.ca](https://communitysolutionnetwork.ca)



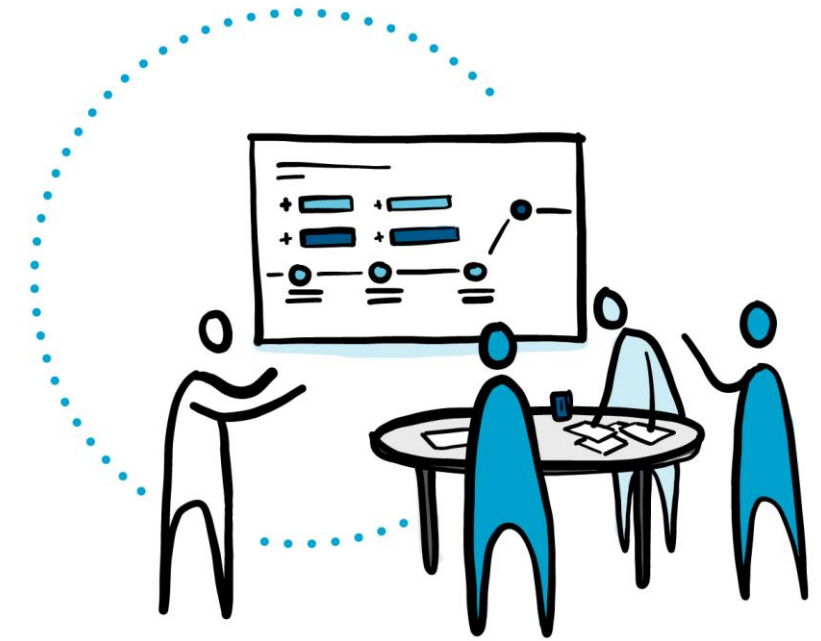


# COMMUNITY SOLUTIONS ADVISORY SERVICE

Evergreen's lead technical partner Open North, provides advisory services and a Community of Practice to support municipalities and Indigenous communities in the digital transformation space.

As part of the Community Solutions Network's advisory services, Open North is offering data governance assessments to municipalities and communities across Canada. There is no cost to participate!

Contact [\*\*communitysolutions@evergreen.ca\*\*](mailto:communitysolutions@evergreen.ca)



# THE FUTURE FIX PODCAST

The Future Fix: Solutions for Communities Across Canada is a collaboration between Evergreen and Spacing. The podcast explores how data and tech are transforming communities across Canada. Each episode delves into an idea or innovation that seeks to address a community challenge – from disaster mitigation to broadband access to public transportation in the suburbs.



# PRACTITIONER'S TOOLKITS

The Community Solutions Network toolkits provide accessible and practical knowledge sharing tools to develop innovation capacity and help communities across Canada with their smart city projects. The series of toolkits is designed to assist municipal staff and community and Indigenous leaders across Canada on specific topics such as community broadband, public engagement and community resilience.





# The Evergreen Conference October 16, 2023

"Public places make our cities. Amid growing social isolation, disparity, and climate change, **public places are an essential service.** At their best, they are magnetic, green and inclusive spaces and neighborhood hubs that connect people to nature and each other, creating a sense of belonging and a reprieve from the hustle and bustle of city life.

**The Evergreen Conference is a space for us to dream big, to imagine what our cities can be and to make the case for place across Canada."**

*- Jen Angel, CEO of Evergreen*



Register  
for virtual  
sessions >>



Canada's largest curated collection of smart city resources: [communitysolutionsnetwork.ca](https://communitysolutionsnetwork.ca)

For the latest news and resources follow us on Twitter and LinkedIn: [@EvergreenCanada](https://twitter.com/EvergreenCanada)

### Contact us!

**Zoya Sodhi**

Senior Program Manager  
Evergreen  
[zsodhi@evergreen.ca](mailto:zsodhi@evergreen.ca)

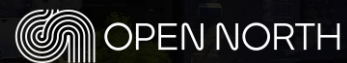
**Juan Rueda**

Program Manager  
Evergreen  
[jrueda@evergreen.ca](mailto:jrueda@evergreen.ca)

Project lead:



Lead technical partner:



With funding provided by:



Infrastructure  
Canada

Canada





# Tools and Resources

**Janelle Frail**

Engagement + Operations Manager



CLIMAtlantic.ca

# Team Overview | Vue d'ensemble de l'équipe

## CORE TEAM | ÉQUIPE CENTRALE



CLIMAtlantic

## PROVINCIAL SPECIALISTS | SPÉCIALISTES PROVINCIAUX



**Sabine Dietz, PHD**

Executive Director | Directrice exécutive



**Janelle Frail**

Engagement + Operations Manager |  
Responsable de l'engagement et des opérations



**Emma Poirier**

Science & Adaptation Specialist | Spécialiste de  
la science et de l'adaptation



**Eva Thorpe**

Communications Lead | Responsable des  
communications



**Emily Kennedy**

Climate Change Adaptation Coordinator | Coordinatrice  
de l'adaptation aux changements climatiques



**Anna Jamieson**



**Heather Harris**



**Kate DesRoches**

Climate Services Interns |  
Stagiaire en services climatiques



**Stephanie Arnold**

Strategy + Programs Manager, Prince Edward Island  
Specialist | Responsable, stratégie et programmes,  
Spécialiste de l'Île-du-Prince-Édouard



**Jenna Miller**

New Brunswick  
Specialist | Spécialiste  
du Nouveau-Brunswick



**Willa Neilsen**

Labrador Specialist |  
Spécialiste du Labrador



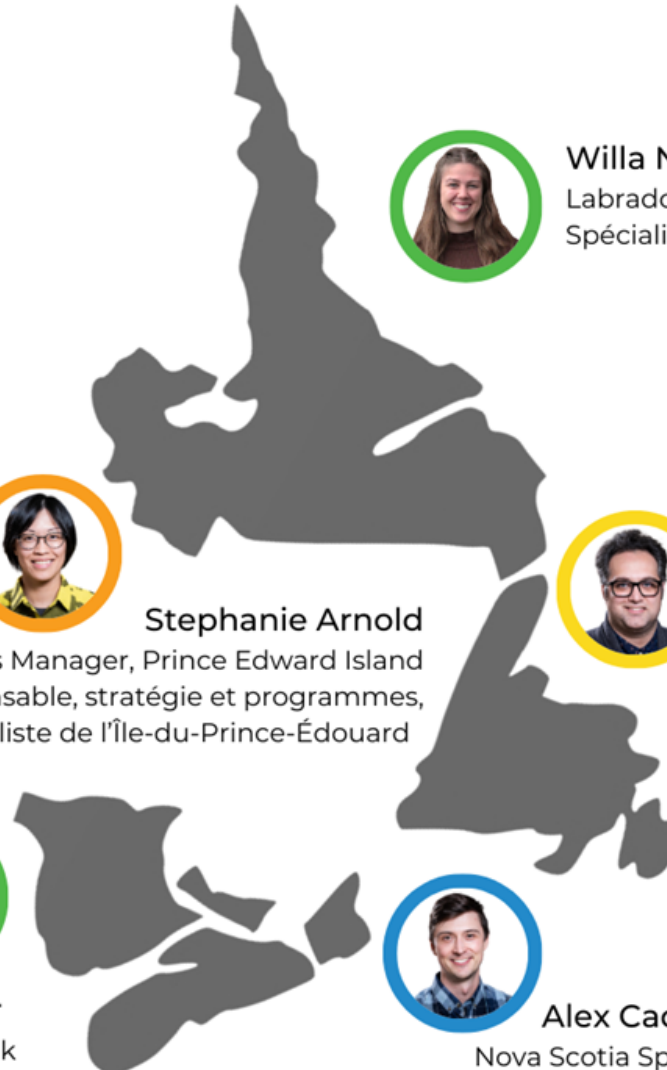
**Sepehr Khosravi**

Newfoundland  
Specialist | Spécialiste  
de Terre-Neuve



**Alex Cadel**

Nova Scotia Specialist | Spécialiste de  
la Nouvelle-Écosse



- **Monthly Newsletter**
- **Website** <https://climatlantic.ca>
- **Social media**
  - Instagram
  - LinkedIn
  - Facebook

- **Bulletin d'information mensuel**
- **Site web**  
<https://climatlantic.ca/fr/>
- **Médias sociaux**
  - Instagram
  - LinkedIn
  - Facebook





## NETWORKING MAP



**Strengthening Atlantic Canada's ability to respond and adapt to a changing climate.**

Use this map to find and connect with individuals and organizations working on climate adaptation.

### How to use this map:

Click on **Filter** to search and filter by Keyword, Location, or Sector.

Click on **Display list view** to view and search for information.

**Zoom in** on the map to clearly showcase the extent of map pins. In highly populated areas it is common for map pins to be located in very close proximity to one another as some individuals and organizations may be neighbours or work out of the same building.

Click a pin on the map for information about the individual or organization that the pin represents.

ADD MY PIN



## CARTE DE RÉSEAUTAGE



**Renforcer la capacité de l'Atlantique canadien à réagir et à s'adapter au changement climatique**

Utilisez cette carte pour retrouver et vous connecter à des individus et organisations travaillant dans le domaine d'adaptation climatique.

### Comment utiliser cette carte :

Cliquez sur **Filtre** pour effectuer une recherche et filtrer par mot clé, lieu ou secteur.

Cliquez sur **Afficher la liste** pour afficher et rechercher des informations.

**Zoomez** sur la carte pour visualiser clairement l'étendue des épingles. Dans les zones très peuplées, il est fréquent que les épingles soient situées très près les unes des autres, car certaines personnes et organisations peuvent être voisines ou travailler dans le même bâtiment.

Cliquez sur une épingle sur la carte pour obtenir des informations sur la personne ou l'organisation représentée.

AJOUTER MON NIP





# ADAPTATION LIBRARY

## Bibliothèque D'Adaptation

**Do you have  
resources you think  
should go here?**

**Avez-vous des ressources  
qui, selon vous, devraient  
figurer ici ?**



An illustration of a coastal landscape featuring a blue sky with white clouds, distant mountains, a body of water, and a sandy beach with a small building. The text 'COASTAL ADAPTATION TOOLKIT' is overlaid in blue.

# COASTAL ADAPTATION TOOLKIT

**Adapting to Climate Change in Coastal Communities of Atlantic Canada**

Explore this toolkit for advice on how to best prepare for coastal climate impacts

## Coastal Adaptation Tool | Outil d'adaptation côtière

An illustration of a coastal landscape featuring a blue sky with white clouds, distant mountains, a body of water, and a sandy beach with a small building. The text 'Boîte à outils d'adaptation côtière' is overlaid in blue.

# Boîte à outils d'adaptation côtière

**Adaptation aux changements climatiques dans les collectivités côtières du Canada atlantique**

Explorez cette boîte à outils pour obtenir des conseils sur la meilleure façon de se préparer aux impacts climatiques côtiers